



## RFSS Career of the Week

W/C: Monday 3rd November 2025

Careers in Focus Series

# Hotel Manager

### Entry Routes:

- ✓ There are no set routes, but you could:
- ✓ Apply for a place on a management trainee scheme or apprenticeship with a hotel company
- ✓ Complete a diploma or degree in a subject like hotel or hospitality management
- ✓ Apply for a junior position in a hotel or restaurant, like front of house manager or kitchen supervisor, to build your experience
- ✓ Some jobs may ask for a driving license, and the ability to speak more than one language.

## Key Words

- ◆ Budgets
- ◆ Marketing
- ◆ Service
- ◆ Corporate
- ◆ Customer Care
- ◆ Events





## RFSS Career of the Week

**W/C: Monday 10th November 2025**

Careers in Focus Series

# Vehicle Mechanic

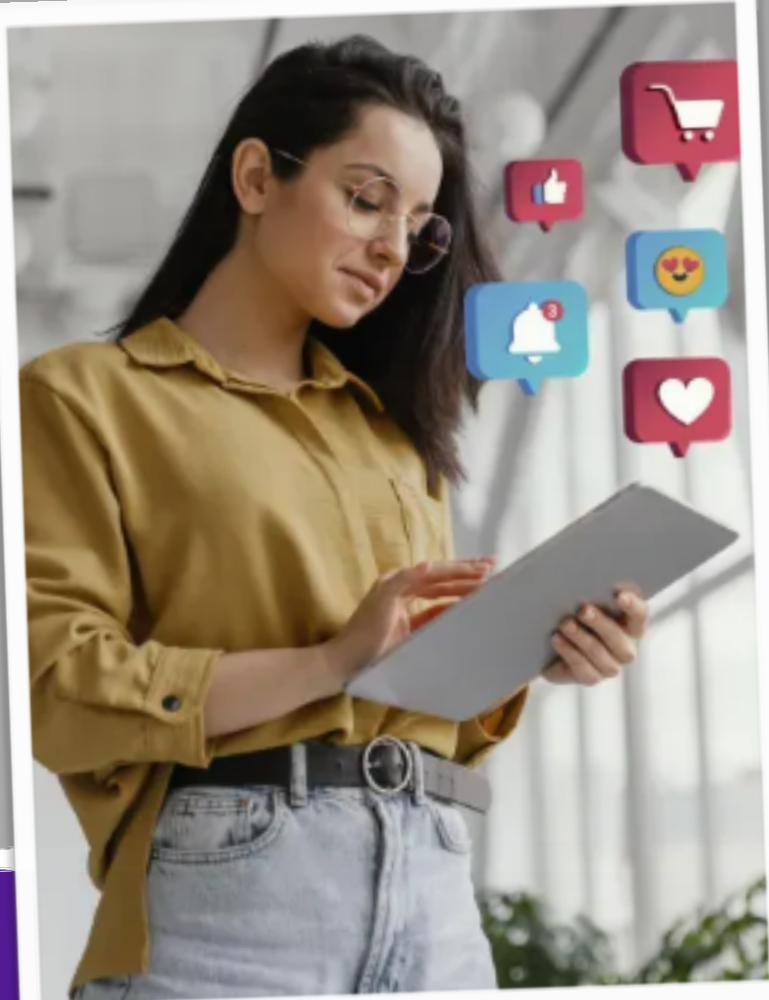
## Entry Routes:

- ✓ A Level 2 qualification in Light Vehicle Maintenance and Repair.
- ✓ A driving licence for road testing the vehicles you've repaired.
- ✓ You can gain your Level 2 qualification via apprenticeship or via a college course.
- ✓ Work experience at a garage would be helpful in this role.

## Key Words

- ◆ Repair
- ◆ Service
- ◆ Parts
- ◆ Safety
- ◆ Compliance
- ◆ Workshop





## RFSS Career of the Week

W/C: Monday 17th November 2025

Careers in Focus Series

# Social Media Manager

## Entry Routes:

- ✓ There are no set requirements, but some employers ask for you to have a degree in subjects like; advertising, media and communications, digital marketing, journalism, public relations or business management.
- ✓ You can get this job without a degree if you have the right skills and experience - such as: excellent ICT skills, and/or experience managing social media accounts.

## Key Words

- ◆ Post
- ◆ Target Audience
- ◆ Promote
- ◆ Content
- ◆ Influence
- ◆ Feedback







## RFSS Career of the Week

W/C: Monday 24th November 2025

Careers in Focus Series

# Interior Designer

## Entry Routes:

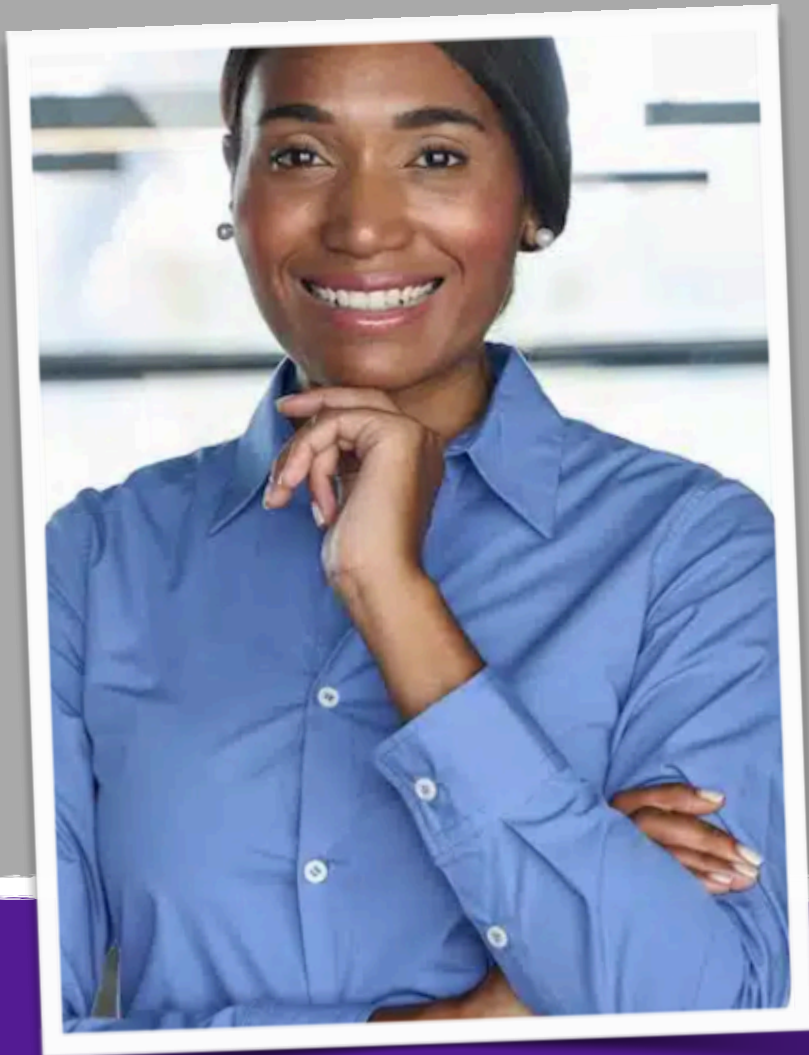
- ✓ You'll need a high level of design skill. Completing a higher education course in an art or design-related subject will help.
- ✓ It'll also be helpful for you have completed paid / unpaid work experience to give you the chance to develop your portfolio (examples of your design work), make contacts, and impress potential employers.

## Key Words

- ◆ Clients
- ◆ Requirements
- ◆ Designs
- ◆ Budget
- ◆ Estimates
- ◆ Textiles







**RFSS Career of the Week**  
**W/C: Monday 1st December 2025**  
**Careers in Focus Series**

# Human Resources Manager

## Entry Routes:

- ✓ You'll usually need human resources (HR) experience, and an HND or degree in HR management, business management or a related subject.
- ✓ Some companies have general management or HR graduate training schemes.

## Key Words

- ◆ Leading
- ◆ Organisation
- ◆ Liaison
- ◆ Recruitment
- ◆ Policies
- ◆ Welfare





# Forestry Worker

## Entry Routes:

- ✓ There is no set route, but it may be helpful to have:
- ✓ School leaver qualifications, like GCSEs, A Levels and/or BTEC qualifications.
- ✓ Gain a qualification in forestry, perhaps through college or an apprenticeship.
- ✓ Get some volunteering experience with a woodland or wildlife charity

Source: <https://www.bbc.com/news/health-56282222>

Source: <https://www.bbc.com/news/health-56282222>

Source: <https://www.bbc.com/news/health-56282222>

Source: <https://www.bbc.com/news/health-56282222>

Source: <https://www.bbc.com/news/health-56282222>

Source: <https://www.bbc.com/news/health-56282222>

Source: <https://www.bbc.com/news/health-56282222>

Source: <https://www.bbc.com/news/health-56282222>

Source: <https://www.bbc.com/news/health-56282222>

Source: <https://www.bbc.com/news/health-56282222>

Source: <https://www.bbc.com/news/health-56282222>

Source: <https://www.bbc.com/news/health-56282222>

Source: <https://www.bbc.com/news/health-56282222>

Source: <https://www.bbc.com/news/health-56282222>

Source: <https://www.bbc.com/news/health-56282222>

Source: <https://www.bbc.com/news/health-56282222>

Source: <https://www.bbc.com/news/health-56282222>

Source: <https://www.bbc.com/news/health-56282222>

Source: <https://www.bbc.com/news/health-56282222>

Source: <https://www.bbc.com/news/health-56282222>

## RFSS Career of the Week

**W/C: Monday 8th December 2025**

Careers in Focus Series

## Key Words

- ◆ Digging
- ◆ Felling
- ◆ Clearing
- ◆ Planting
- ◆ Maintaining
- ◆ Protecting





## RFSS Career of the Week

**W/C: Monday 15th December 2025**

Careers in Focus Series

# Santa Claus Impersonator

## Entry Routes:

- ✓ Santa Claus impersonators are professional performers who can be hired for events like parties, corporate functions, and visits to places like shopping centres or grottoes.
- ✓ These performers are often professional actors who maintain character for the duration of the event, so a good grasp of Drama and Theatre studies is helpful.
- ✓ It would be good if you had an understanding of handling reindeers, and had your sleigh licence!

## Key Words

- ◆ Christmas
- ◆ Holidays
- ◆ Joy
- ◆ Festive
- ◆ Reindeer
- ◆ Sleigh







## RFSS Career of the Week

W/C: Monday 12th January 2026

Careers in Focus Series

# Television Presenter

### Entry Routes:

- ✓ There are no set requirements. Competition for jobs is strong though so you will need determination, persistence, and the ability to network and promote yourself.
- ✓ Some presenters move into TV from other areas of the media like journalism or media research. You may need a degree or detailed knowledge if you want to work as a presenter for specialist programmes like science, history or property development.

## Key Words

- ◆ Journalist
- ◆ Recording
- ◆ Projects
- ◆ Creating
- ◆ Delivering
- ◆ News





## RFSS Career of the Week

W/C: Monday 19th January 2026

Careers in Focus Series

# Town Planner

## Entry Routes:

- ✓ You'll need an undergraduate or a postgraduate degree in a subject like town planning, urban planning, or urban design.
- ✓ A related subject like architecture, environment and development, or engineering, would help, too.
- ✓ You could study part-time for a qualification while working in a role like planning technician or support staff member.

## Key Words

- ◆ Plans
- ◆ Surveying
- ◆ Geographical
- ◆ Transport
- ◆ Systems
- ◆ Urban





## RFSS Career of the Week

W/C: Monday 26th January 2026

Careers in Focus Series

# Art Therapist

## Entry Routes:

- ✓ You'll need a degree in art therapy or another relevant subject like fine art, design, psychology, social work, nursing, or teaching.
- ✓ You may also need to complete a postgraduate course in art therapy or art psychotherapy.
- ✓ In some countries, this course will need to be approved by a body of professionals (like the Health and Care Professions Council in UK).

## Key Words

- ◆ Techniques
- ◆ Materials
- ◆ Artistic
- ◆ Skills
- ◆ Expression
- ◆ Feelings







**RFSS Career of the Week**  
**W/C: Monday 2nd February 2026**  
**Careers in Focus Series**

# Dermatologist

## Entry Routes:

- ✓ To become a dermatologist, you'll need to complete speciality training. Prior to starting your specialty training you need to have completed a medical degree. After your degree, speciality training can take between four and five years, depending on where you live.
- ✓ If you have already made a decision to pursue a career in dermatology, try to get experience in the specialty or related areas such as genitourinary medicine, rheumatology, medical oncology, and immunology.

## Key Words

- ◆ Examine
- ◆ Diagnose
- ◆ Treatment
- ◆ Conditions
- ◆ Skin
- ◆ Research





## RFSS Career of the Week

W/C: Monday 9th February 2026

Careers in Focus Series

# Investment Banker

## Entry Routes:

- ✓ You'll usually need a 2:1 degree or higher to be recruited by an investment bank. This can be in any subject, though a related topic like mathematics, finance, economics, or business is a plus. You'll be doing training on the job, and you might have to take exams for the first few years of your career. Work experience in the industry is essential, so you'll need to complete an internship, or other work placement with an investment bank before graduation. These can be competitive so check out what opportunities are out there.

## Key Words

- ◆ Investing
- ◆ Markets
- ◆ Budgets
- ◆ Corporate
- ◆ Trading
- ◆ Borrowing





## RFSS Career of the Week

W/C: Monday 23rd February 2026

Careers in Focus Series

## Retail Buyer

### Entry Routes:

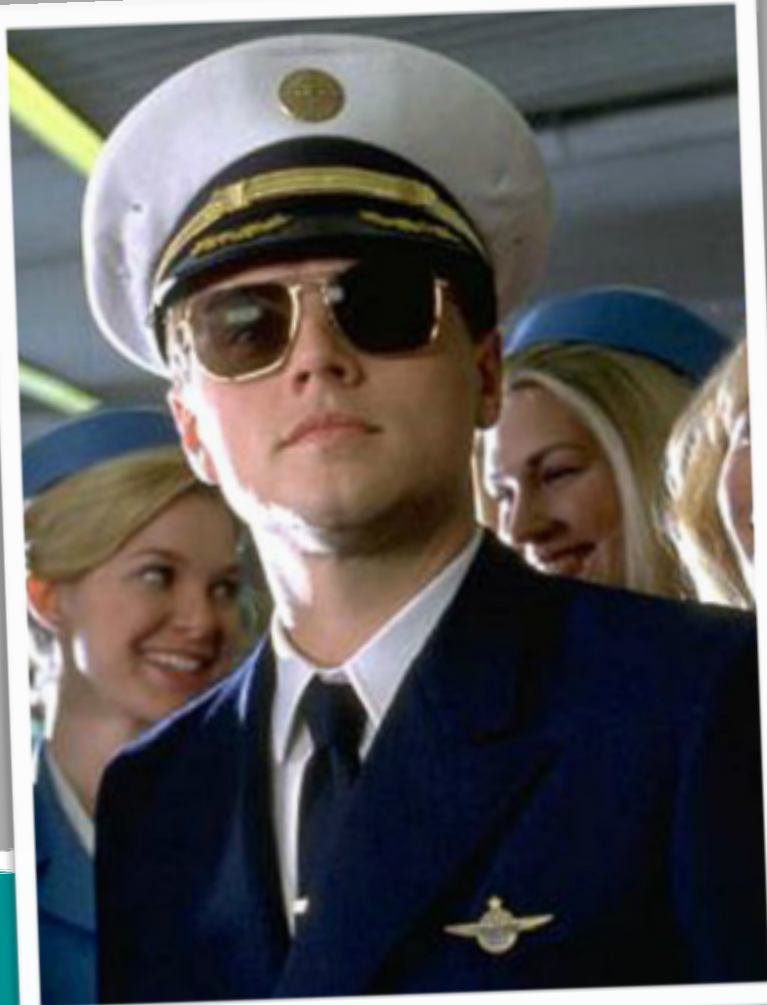
- ✓ You'll usually need a degree or college qualification in retail or business. Some retail experience will also help.
- ✓ Some companies offer buyer training schemes or management training schemes where you can specialise in buying.
- ✓ You may also be able to work your way up from the shop floor to the role of buyer's administration assistant, then assistant or junior buyer. You could start retail training through an apprenticeship.

## Key Words

- ◆ Negotiate
- ◆ Prices
- ◆ Audit
- ◆ Adapt
- ◆ Products
- ◆ Target Market







## RFSS Career of the Week

**W/C: Monday 2nd March 2026**

Careers in Focus Series

# Airline Pilot

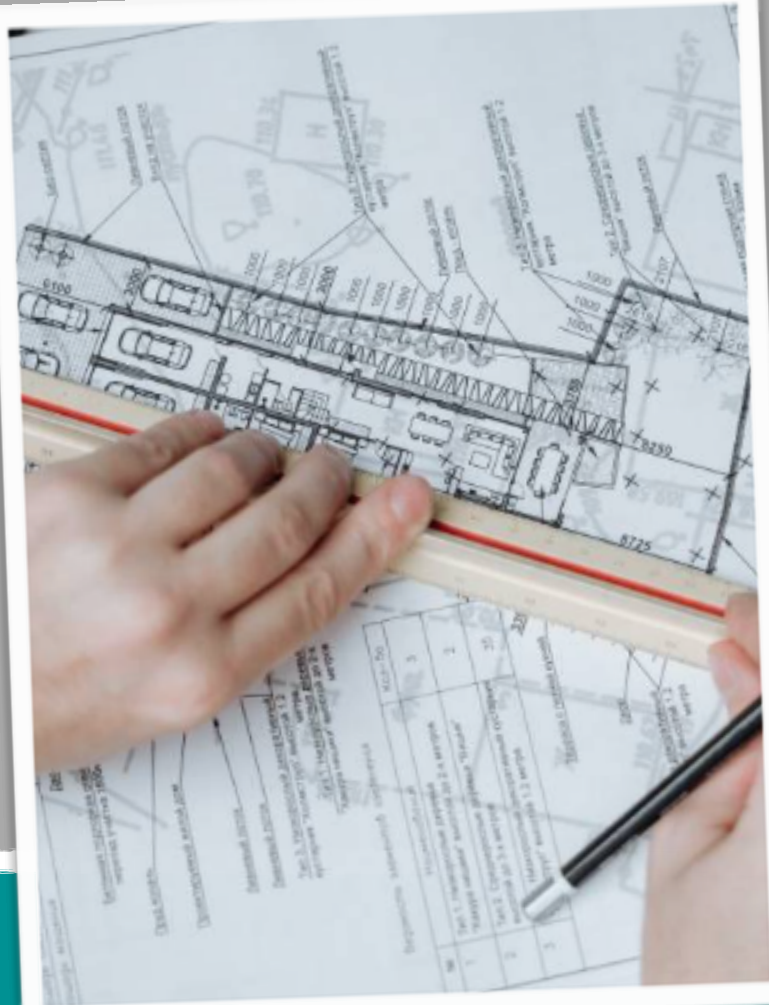
## Entry Routes:

- ✓ Pass a medical exam and background check.
- ✓ Complete a pilot training course like the ATPL which requires a certain number of hours and experience to become 'unfrozen' and usable in the industry - this can be very expensive.
- ✓ You could undertake an aviation degree but this isn't always necessary.

## Key Words

- ◆ Checks
- ◆ Safety
- ◆ Routes
- ◆ Reports
- ◆ Timescales
- ◆ Progress





## RFSS Career of the Week

W/C: Monday 9th March 2026

Careers in Focus Series

# Structural Engineer

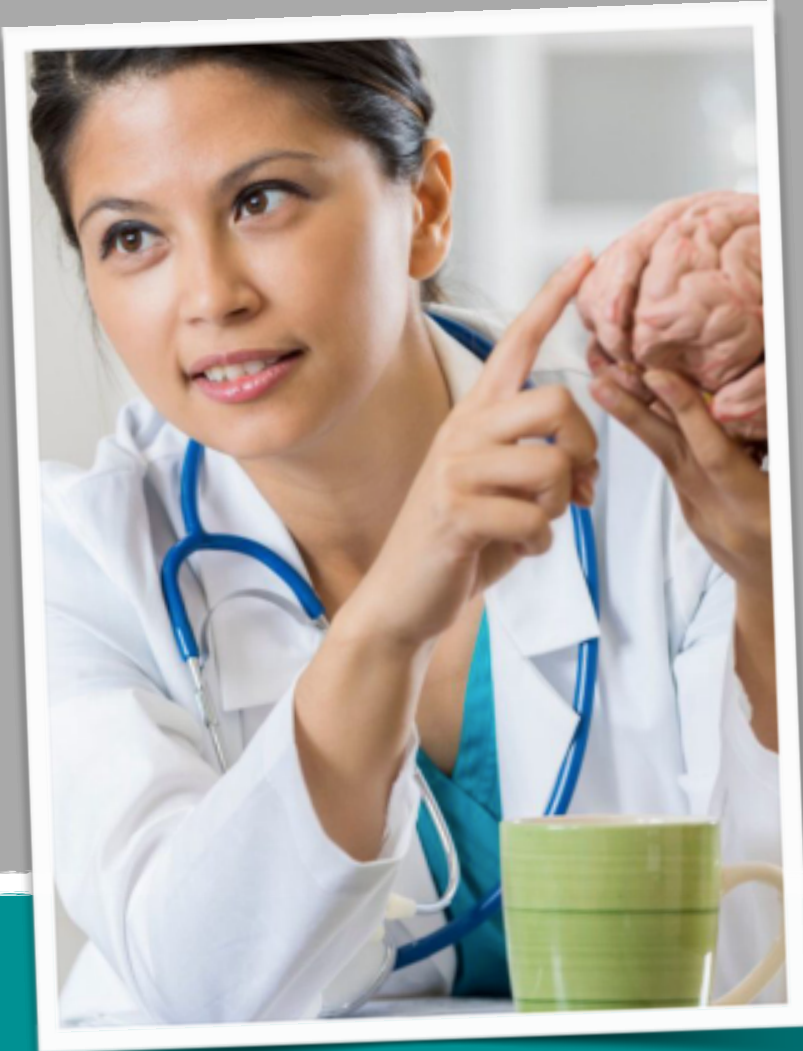
## Entry Routes:

- ✓ University degree, Apprenticeship or Higher National Diploma (HND).
- ✓ You usually need GCSEs at grades 9-4 and post 16 qualifications like A-Levels, sometimes including maths and science, beforehand.

## Key Words

- ◆ Construction
- ◆ Plans
- ◆ Design
- ◆ Sustainability
- ◆ Health and Safety
- ◆ Emissions





**RFSS Career of the Week**

**W/C: Monday 16th March 2026**

**Careers in Focus Series**

# Neurologist

## Entry Routes:

- ✓ Complete a degree in medicine
- ✓ Complete general training, such as a foundation programme in the UK
- ✓ Complete at least two or three years of specialty training, sometimes referred to as a fellowship
- ✓ To enter medical school, you'll often need to complete vigorous exams, such as the UCAT or BMAT (in the UK).

## Key Words

- ◆ Treatment
- ◆ Investigate
- ◆ Diagnose
- ◆ Support
- ◆ System
- ◆ Neurological







**RFSS Career of the Week**

**W/C: Monday 23rd March 2026**

**Careers in Focus Series**

# Geospatial Technician

## Entry Routes:

- ✓ As there's no typical route for career development, career progression can depend on where you start.
- ✓ Teams are often made up of a range of professionals including cartographers, computer programmers, data analysts, information officers/managers and project managers.
- ✓ You may be able to progress on to team leader, project manager and then to overall geospatial / GIS manager, although there are other possibilities.

## Key Words

- ◆ Maps
- ◆ Satellite Navigation
- ◆ Drones
- ◆ GPS
- ◆ Environments
- ◆ Databases

